



CAPITAL PLAZA OFFICE BUILDING | 5407 N IH-35, AUSTIN, TX 78723

Features

- Prime Central Austin location on IH-35
- Exceptional visibility and access
- Walking distance to numerous restaurants and retail
- Located near Capital Metro bus route
- Building signage available
- 4.5 per 1,000 sf parking

FOR LEASE

TOTAL SF: 43,410

SUITE 301:	1,492 RSF	SUITE 305:	1,543 RSF
SUITE 302:	1,926 RSF	SUITE 306:	573 RSF
SUITE 304:	2,500 RSF	SUITE 400:	5,233 RSF



Jeff Nebrat

Senior Vice President

512.482.0094

jnebrat@weitzmangroup.com

Andrew Alvarado

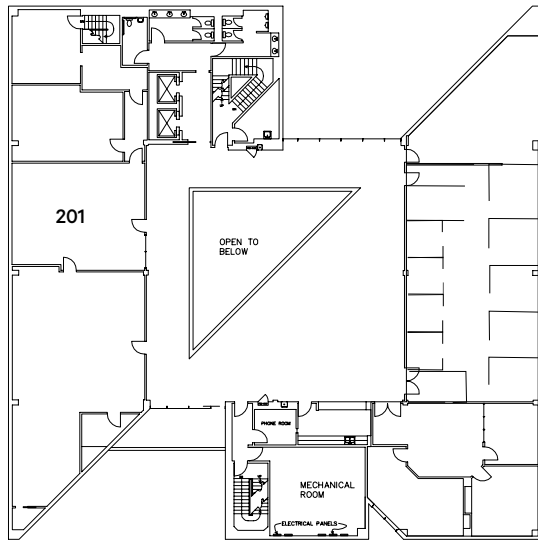
Associate

512.482.6131

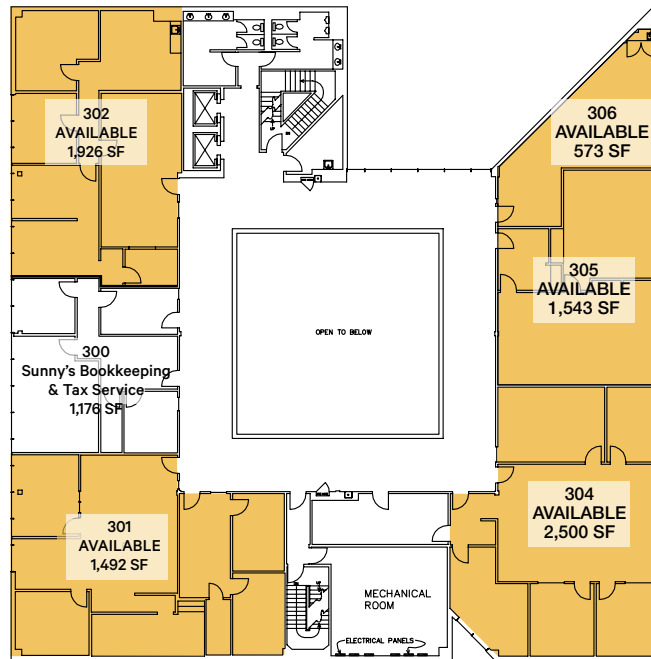
aalvarado@weitzmangroup.com

weitzman[®]

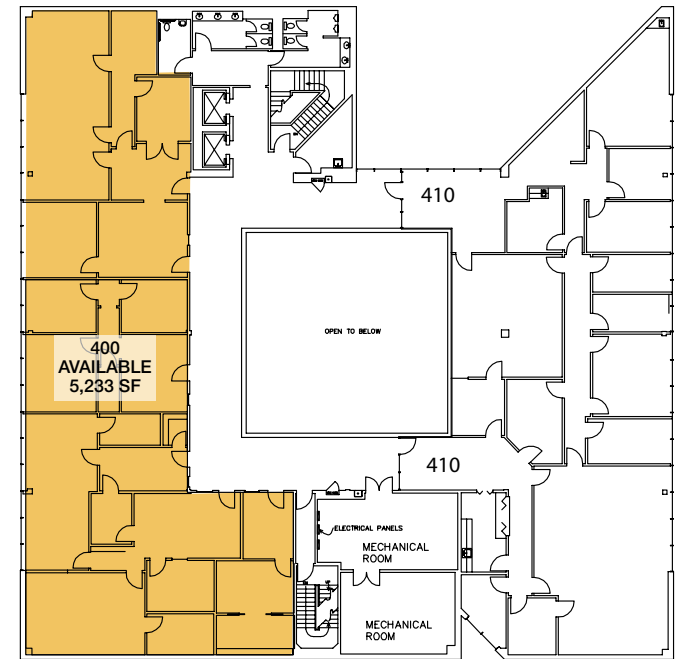
CAPITAL PLAZA OFFICE BUILDING | 5407 IH-35, AUSTIN, TX 78723



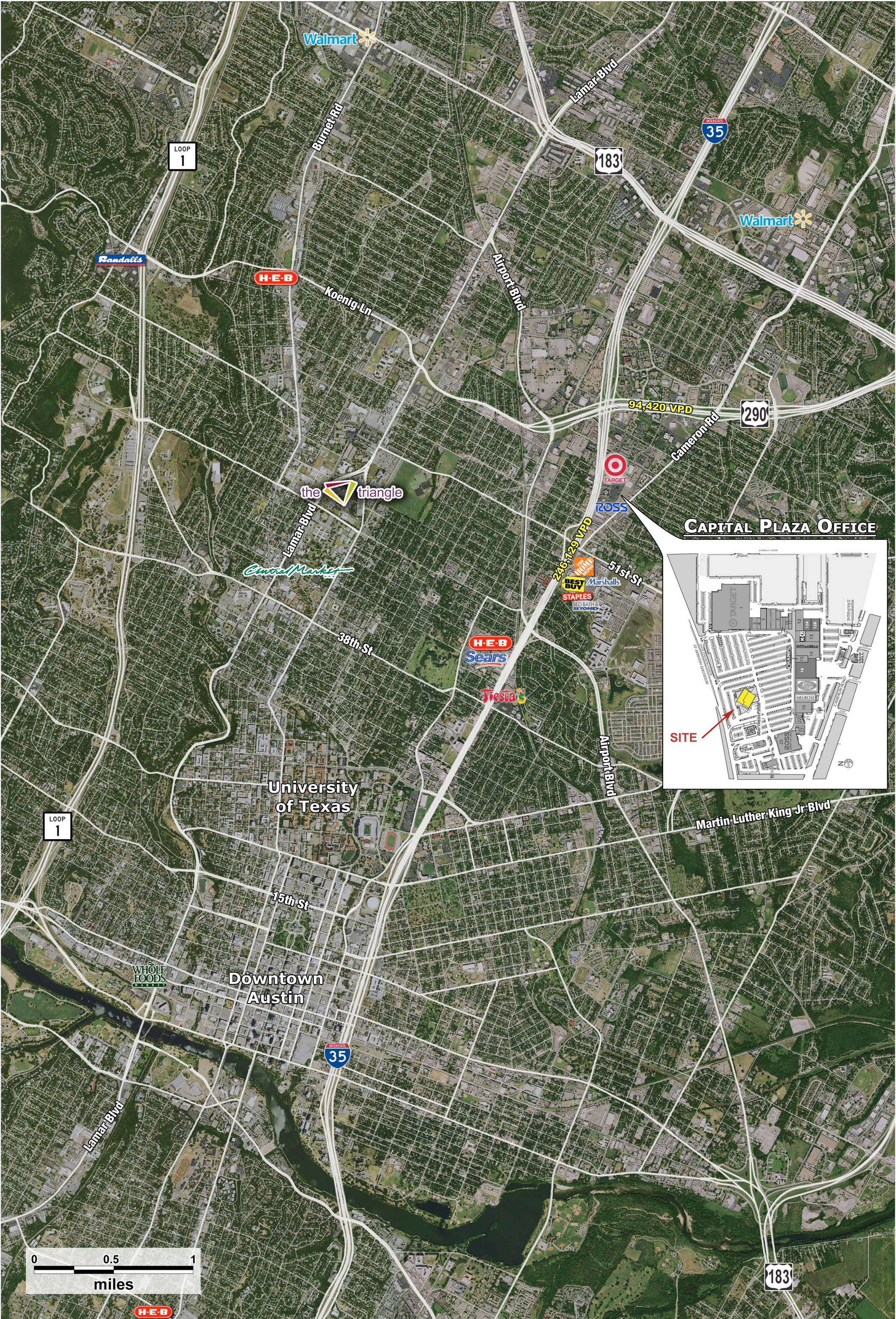
2ND FLOOR



3RD FLOOR



4TH FLOOR



CAPITAL PLAZA OFFICE

