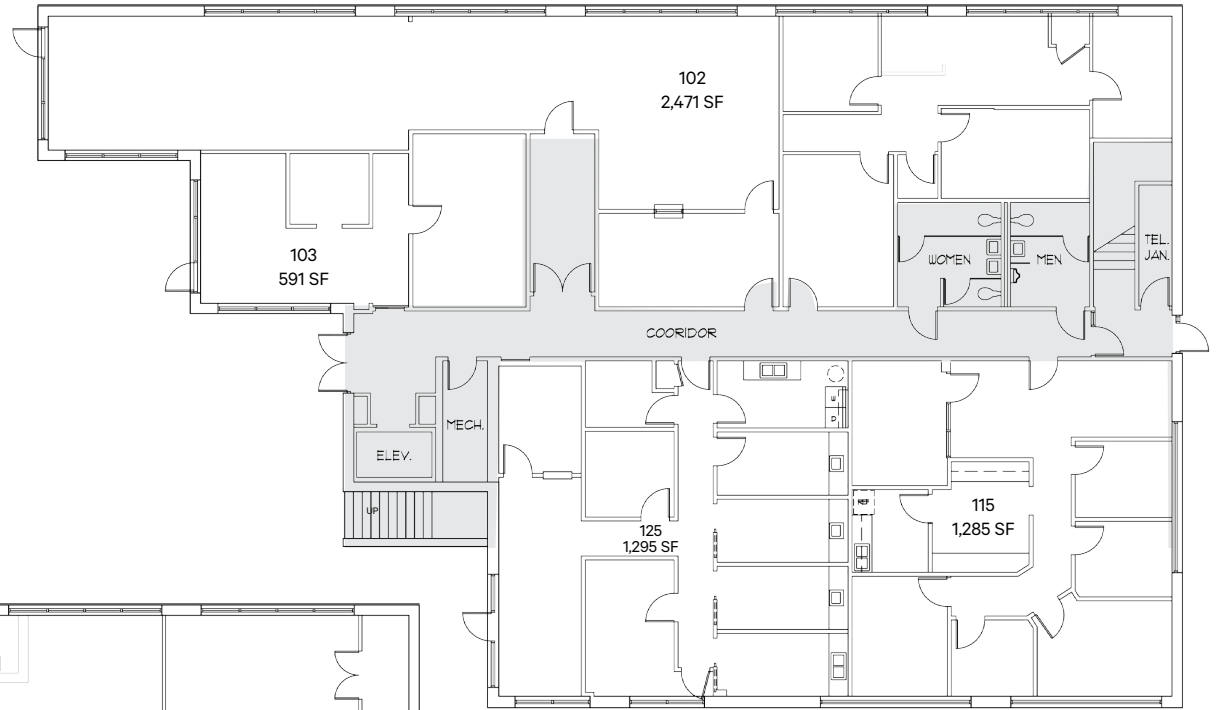


# DAL-RICH TOWNE SQUARE - PROFESSIONAL BUILDING | SEC OF COIT RD & BELTLINE RD, RICHARDSON, TX 75080

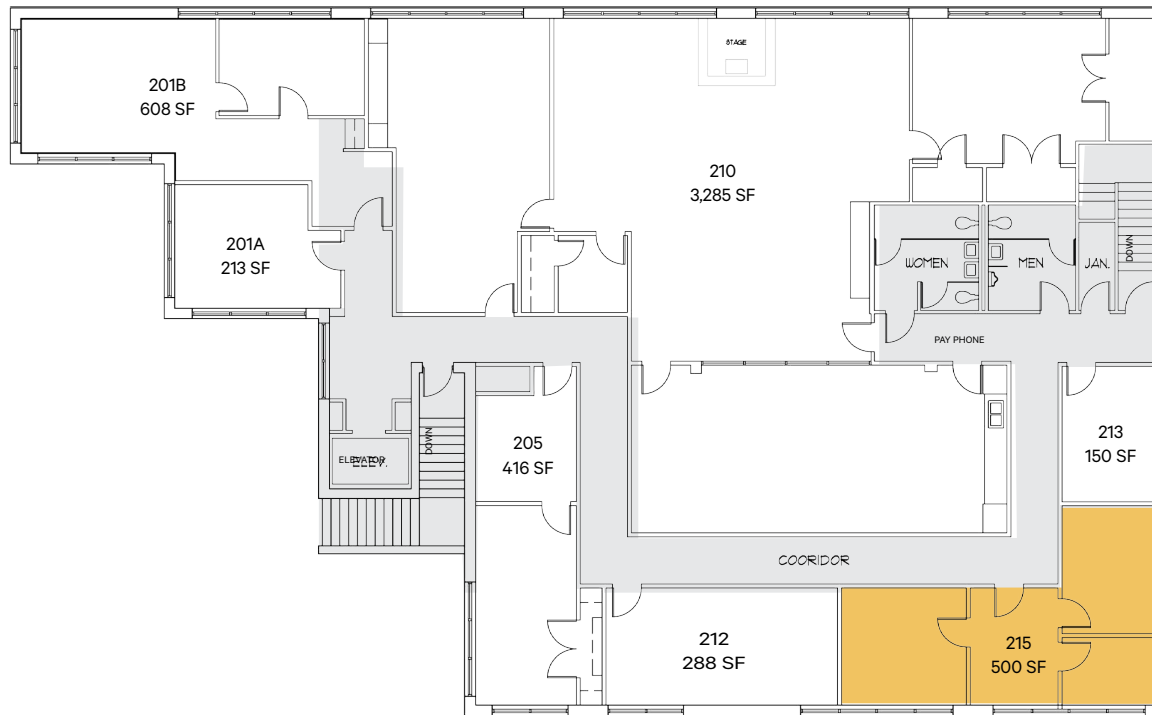
## Available Space

215 500 sf



**FIRST FLOOR PLAN**

3/32" = 1'-0"



**SECOND FLOOR PLAN**

3/32" = 1'-0"

## Current Tenants

102	Silver Pyramid	2,471 sf
103	James W. Hunt	591 sf
115	Big Brothers Big Sisters	1,285 sf
125	Silver Pyramid	1,295 sf
201A	Vining Insurance Agency	213 sf
201B	Phillip Mahuwe - Account.	608 sf
205	Dr. Charles Rosin	416 sf
210	AA-North Dallas Group	3,285 sf
212	Hardwick Law	288 sf
213	Storage	150 sf