



200 W US 290 | 200 W US 290, ELGIN, TX 78621

Features

- Outparcel retail at hard corner
- Located on the SWC of Hwy 290 & Ochoa St
- Ground or building lease available on 0.69 AC
- 30 minute commute to Tesla Giga Factory & central Austin (subject to daily traffic)

FOR LEASE

TOTAL SF: 3,714
CONTACT FOR MORE INFORMATION

Traffic Counts		Demographics	YEAR: 2020	1 MILE	3 MILE	5 MILE
US Hwy 290	32,820 VPD	Total Population		3,418	11,959	19,104
		Daytime Population		3,074	10,072	15,738
		Avg HH Income		\$53,665	\$76,289	\$87,407
		Total Households		1,067	3,894	6,292

Area Retailers & Businesses



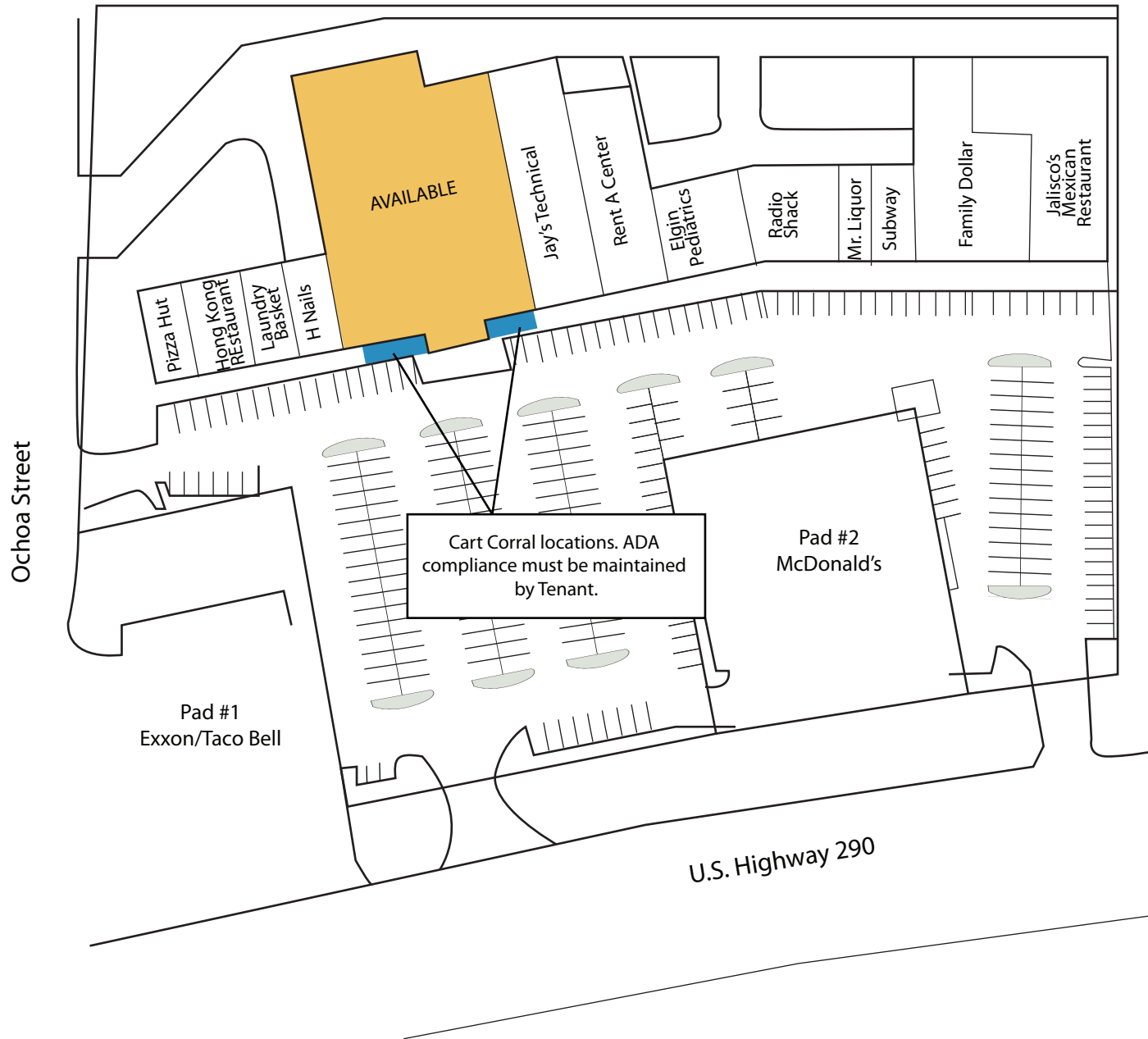


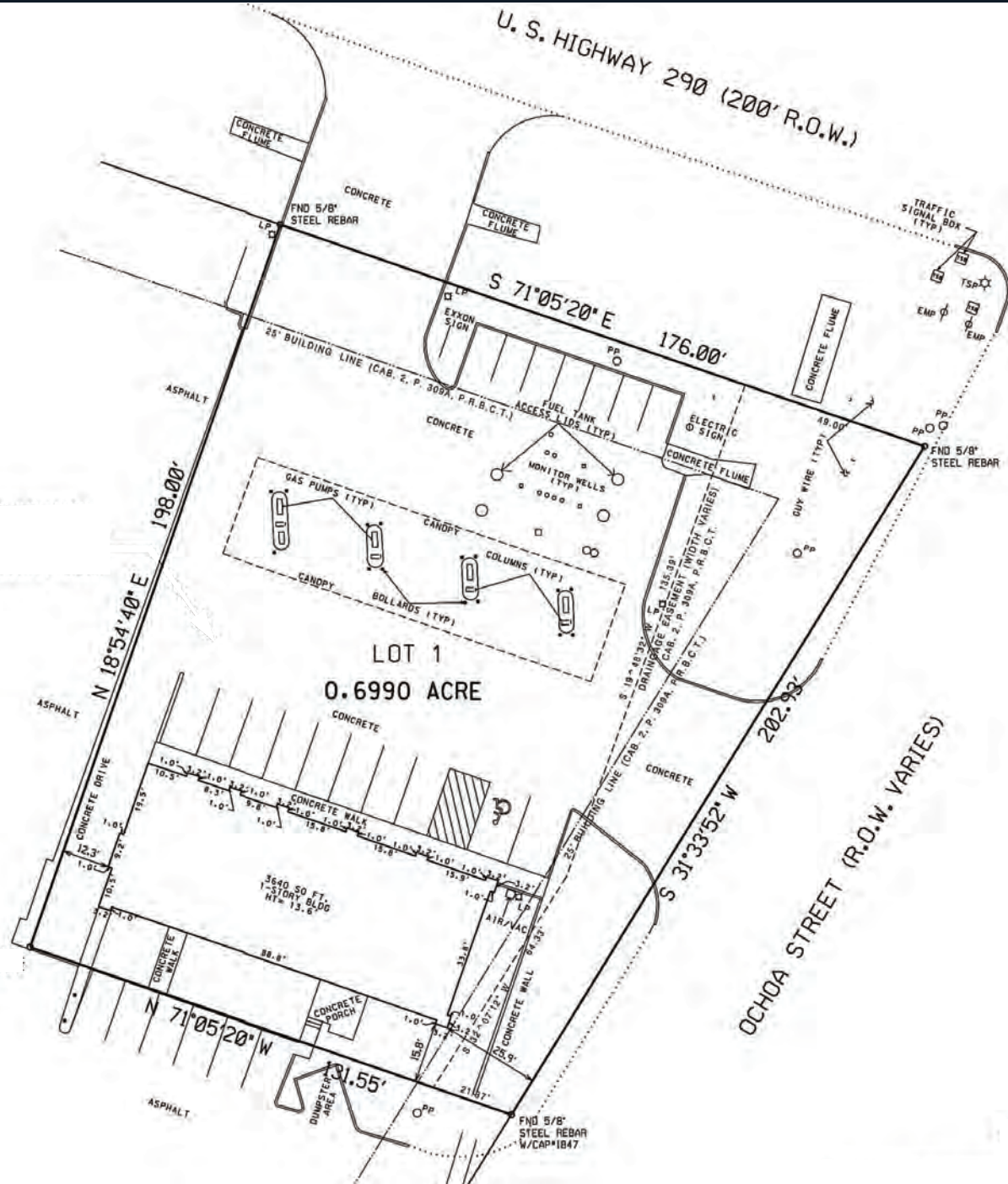
200 W US 290 | 200 W US 290, ELGIN, TX 78621

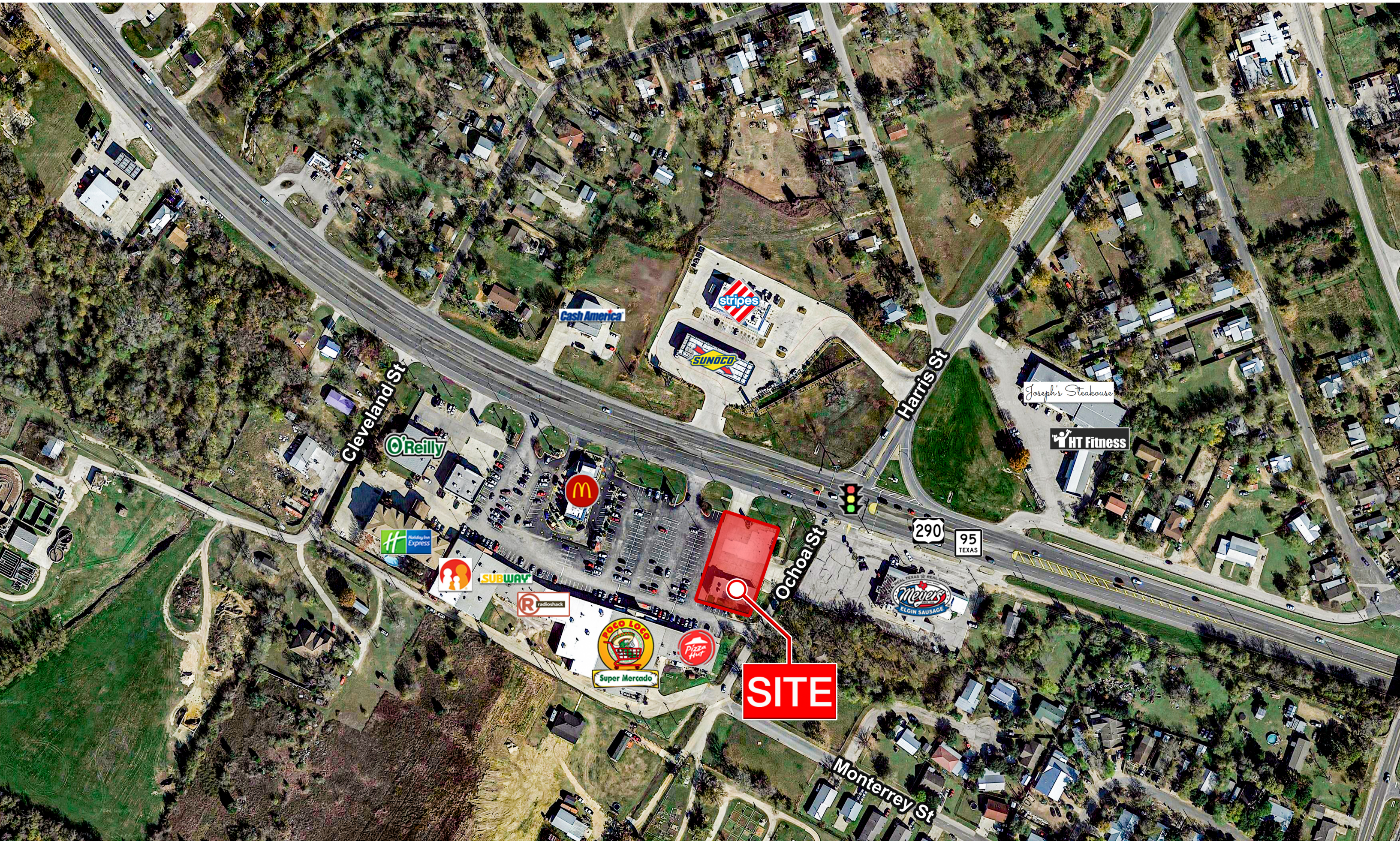


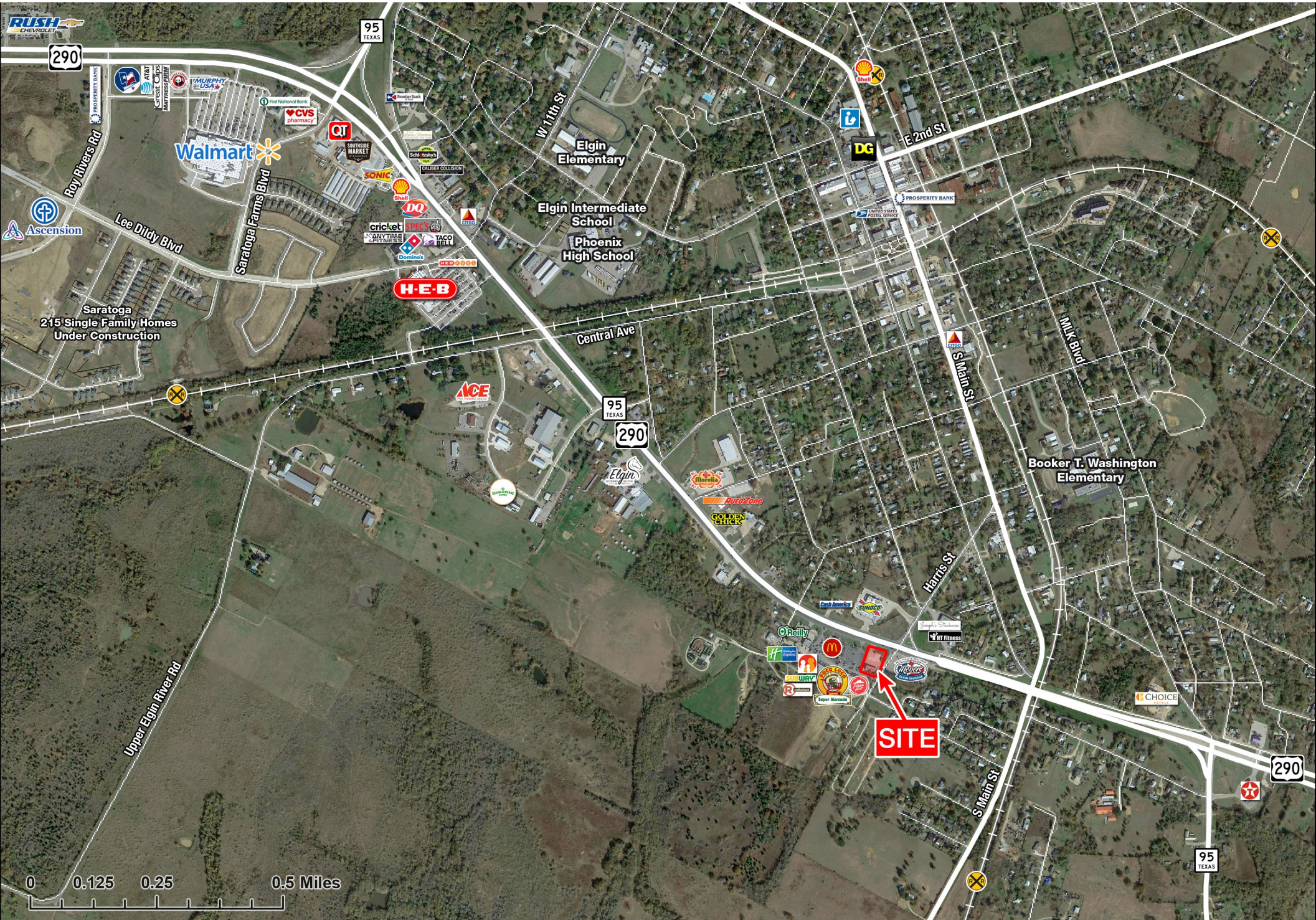
The information was obtained from sources deemed reliable; however, Weitzman has not verified it and makes no guarantees, warranties or representations as to the completeness or accuracy thereof. The presentation of this real estate information is subject to errors; omissions; change of price; prior sale or lease, or withdrawal without notice. You and your advisors should conduct a careful independent investigation of the property to determine if it is suitable for your intended purpose.

weitzman[®]











SITE

25 minute drive time

TESLA
GIGAFACTORY

SAMSUNG

APPLIED MATERIALS

AUSTIN COMMUNITY COLLEGE