

FULLY LEASED



10025 BURNET ROAD | 10025 BURNET RD, AUSTIN, TX 78758

Features

- Two separate free-standing buildings on Burnet Rd with drive-thru or .875 acres for ground lease
- Minutes from The Domain and Arboretum
- Located on the North Burnet/Gateway Corridor

FOR LEASE

CONTACT FOR MORE INFORMATION

Traffic Counts		Demographics	YEAR: 2021	1 MILE	3 MILE	5 MILE
Burnet Rd	32,784 VPD	Total Population		8,927	143,626	323,297
Rutland	17,632 VPD	Daytime Populatoin		18,350	174,697	369,274
		Average HH Income		\$62,198	\$93,815	\$101,942
		Total Households		3,386	64,364	142,212

Area Retailers & Businesses

NORDSTROM
rack

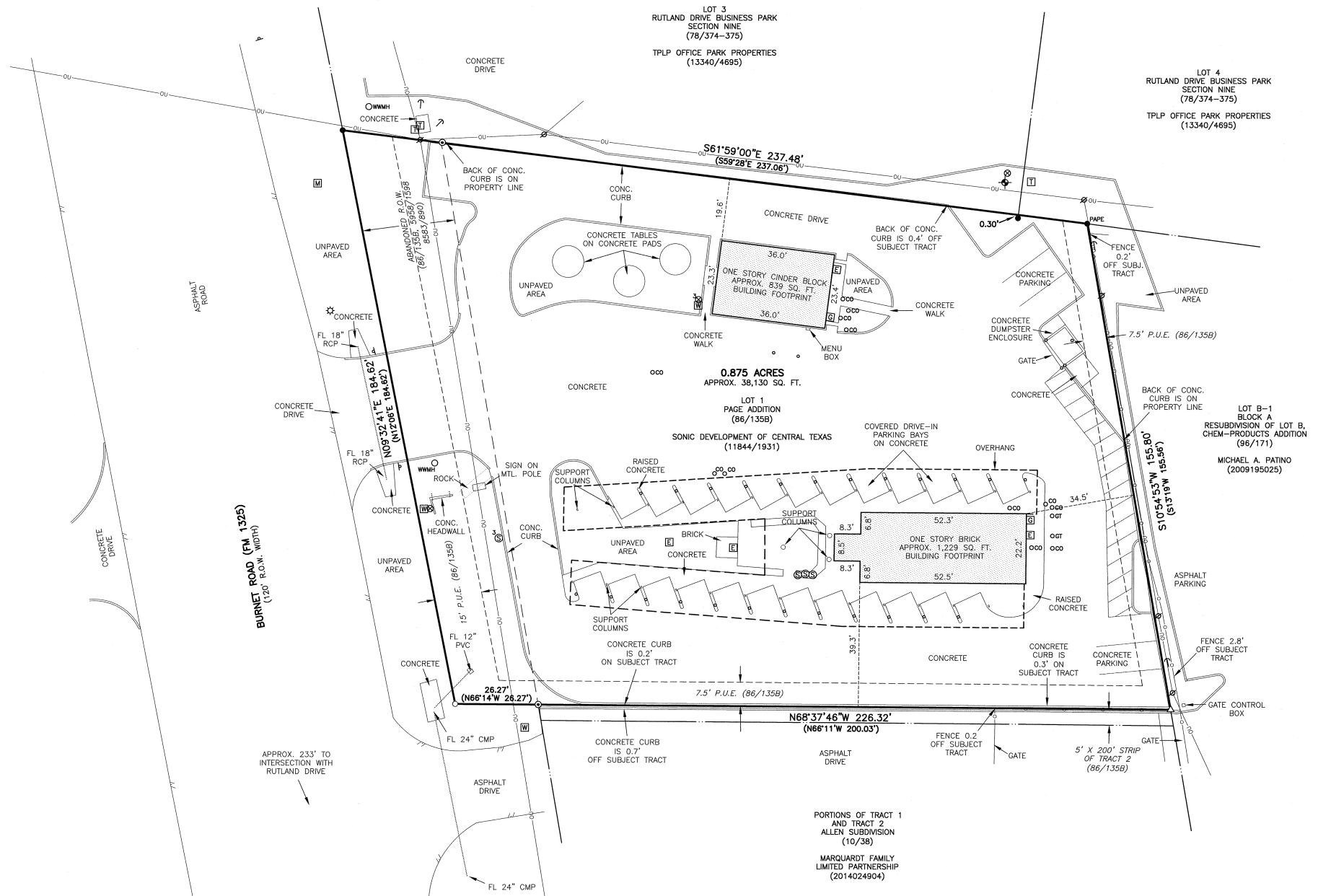


BLACK WALNUT
CENTRE

The information was obtained from sources deemed reliable; however, Weitzman has not verified it and makes no guarantees, warranties or representations as to the completeness or accuracy thereof. The presentation of this real estate information is subject to errors; omissions; change of price; prior sale or lease, or withdrawal without notice. You and your advisors should conduct a careful independent investigation of the property to determine if it is suitable for your intended purpose.

weitzman®

10025 BURNET ROAD | 10025 BURNET RD, AUSTIN, TX 78758



The information was obtained from sources deemed reliable; however, Weitzman has not verified it and makes no guarantees, warranties or representations as to the completeness or accuracy thereof. The presentation of this real estate information is subject to errors; omissions; change of price; prior sale or lease, or withdrawal without notice. You and your advisors should conduct a careful independent investigation of the property to determine if it is suitable for your intended purpose.

weitzman®

